



Noson Croeso – Welcome Evening Blynyddoedd Cynnar – Early Years Medi 2026

Ysgol yr Holl Saint – All Saints' School, Gresford. Wrexham.



Overview

Activity	Location
Classroom Tours	Nursery / Reception Classrooms
Early Years Presentation	Main Hall
Childcare Booking System	Main Hall
Question & Answer	Main Hall





Our Vision & Values

“With respect, friendship and care, we learn here and succeed anywhere.”

Respect: We respect ourselves, each other and God’s world.

Friendship: We show friendship to our peers and our friends around the world.

Care: We care for each other, our community and environment.





Our Curriculum Vision

To provide a broad, balanced, engaging curriculum which develops all pupils as life-long learners, and ethical, global citizens.

Creative Learners

Curious Minds

Welsh Heritage

Eco-Friendly

Respectful of God's World

Enquiring Learners

Critical Thinkers



School Context

- Church in Wales Voluntary Aided Primary School
- 380 pupils in attendance
- Pupils aged 2 – 11 years old
- 45 pupils per year group
- Mixed classes
- Engagement in national, regional and local work streams linked to school improvement.



School Organisation

- Early Years – Playgroup, Early Education, Nursery & Reception
- Year 1 – 2 – Progression Step 2
- Year 3 – 4 – Progression Step 2/3
- Year 5 – 6 – Progression Step 3



School Uniform



<https://ourschoolwear.co.uk/pages/primary-schools>

School Uniform



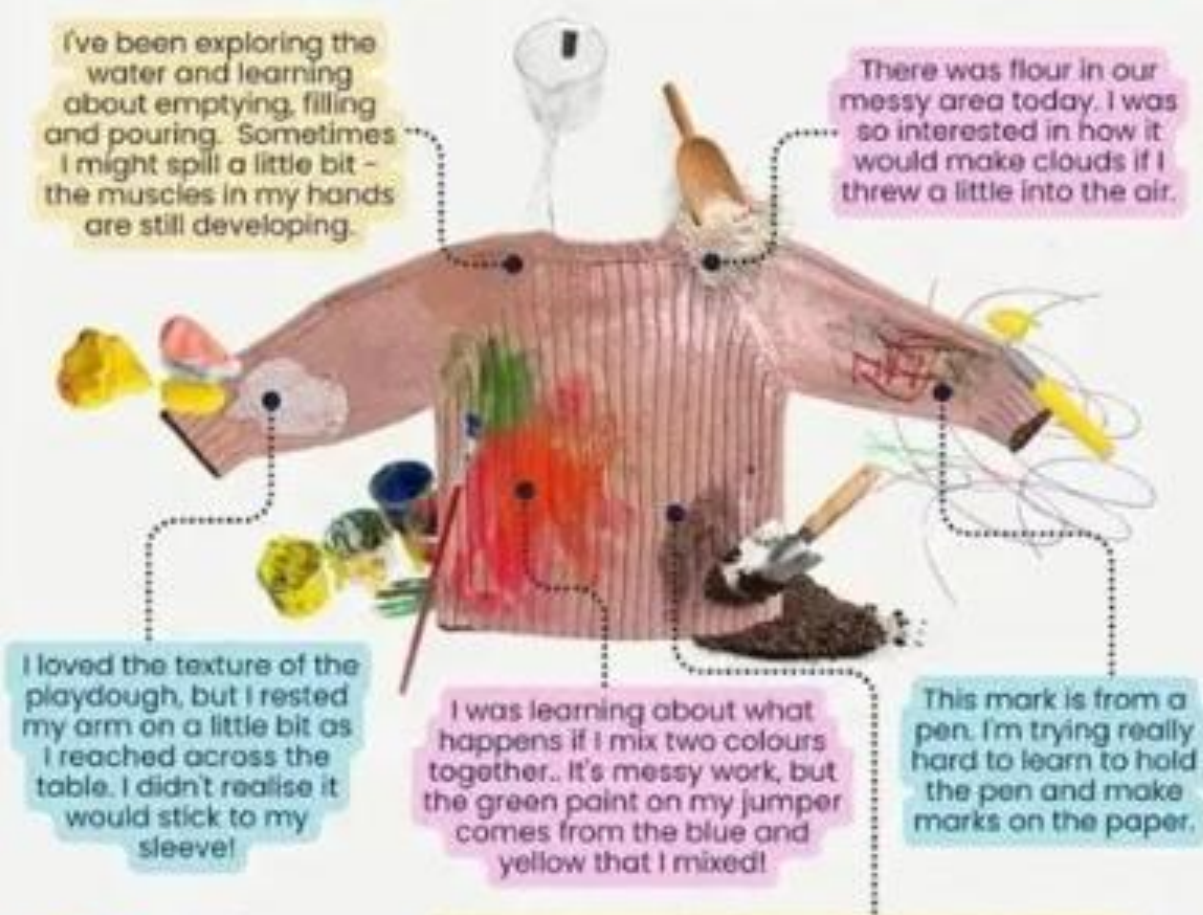
<http://www.ourschoolwear.co.uk>



I'm sorry I got messy today but..

I've been exploring the water and learning about emptying, filling and pouring. Sometimes I might spill a little bit - the muscles in my hands are still developing.

There was flour in our messy area today. I was so interested in how it would make clouds if I threw a little into the air.



I loved the texture of the playdough, but I rested my arm on a little bit as I reached across the table. I didn't realise it would stick to my sleeve!

I was learning about what happens if I mix two colours together.. It's messy work, but the green paint on my jumper comes from the blue and yellow that I mixed!

This mark is from a pen. I'm trying really hard to learn to hold the pen and make marks on the paper.

The mud kitchen is very dirty, but it's so much fun! Playing there helps me develop my imagination and explore my understanding of the world. I watched you cook at home and I wanted to try by myself.

What your child will need:

- A reading folder
- A change of underwear/socks/tights
- Water bottle
- A healthy snack eg an orange, chopped grapes, an apple
- PLEASE remember to label EVERYTHING!

Communication



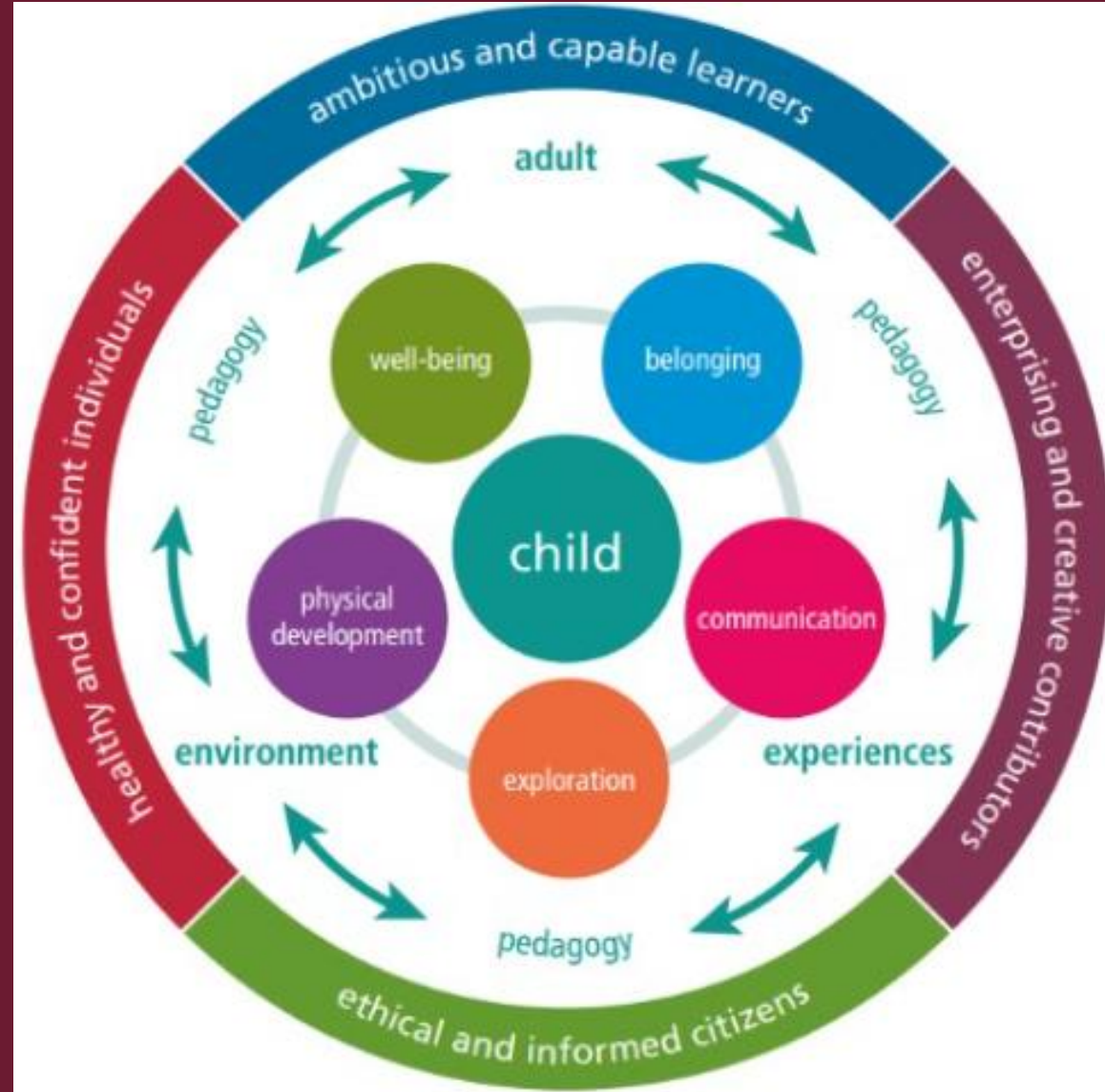
Communication

- We will send a message via SeeSaw to let you know when our PE and Forest School sessions will start
- ParentPay – once your child has started with us we will send a code to set up your account



Collecting your child from school







Expressive Arts



Humanities and Religious Education



Language, Literacy and Communication

AREAS OF LEARNING IN THE FOUNDATION PHASE

Science and Technology



Health and Wellbeing



Mathematics and Numeracy



Continuous Provision



Expressive Arts



Humanities



Science & Technology



1.1 Can I show something and ask a question? 11.08.20

Handa's Surprise Fruit Tasting

Fruit		✓	X
Pineapple			X
Mango			X
Passion Fruit			X
Orange		✓	
Papaya			X

My favourite fruit was orange

1.1 Can I show something and ask a question? 11.08.20

Handa's Surprise Fruit Tasting

Fruit		✓	X
Pineapple		✓	
Mango		✓	
Passion Fruit		✓	
Orange		✓	
Papaya		✓	

My favourite fruit was mango

1.1 Can I show something and ask a question? 11.08.20

Handa's Surprise Fruit Tasting

Fruit		✓	X
Pineapple			X
Mango			X
Passion Fruit			X
Orange		✓	
Papaya			X

My favourite fruit was mango

1.1 Can I show something and ask a question? 11.08.20

Handa's Surprise Fruit Tasting

Fruit		✓	X
Pineapple			X
Mango			X
Passion Fruit			X
Orange		✓	
Papaya			X

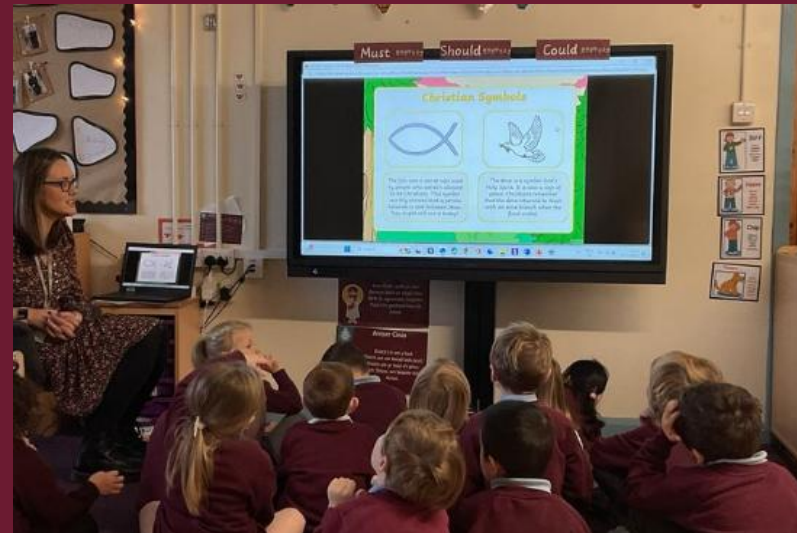
My favourite fruit was Pineapple



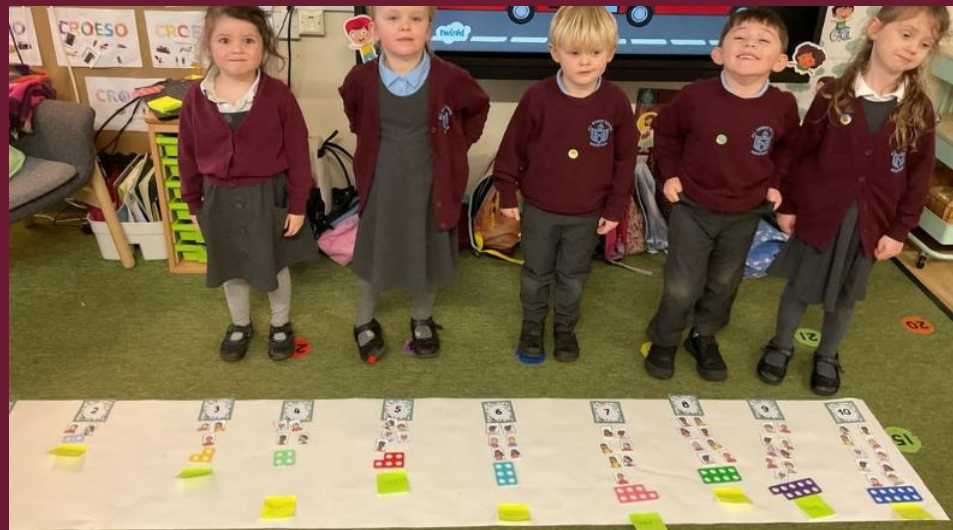
Health & Wellbeing



Religious Education



Mathematics & Numeracy



Language, Literacy & Communication



Forest School



Useful Advice



Encourage Independence

- Encourage your child to practise personal hygiene
- Encourage your child to practise dressing/undressing at home
- Lots of useful information on the school website relating to developing independence in your child



Sharing information

- Regular communication
- Keep us informed of any changes



How to support your child

- Toilet training
- Encourage independence – put on their own coat
- Fine motor activities – playdough, brushing, painting, mark making
- Sharing stories
- Talk



Transition Days

Thursday 25th June
and
Thursday 2nd July



Gresford Governors' Clubs & Playgroup



Termtime

- Breakfast Club – 7.45 – 8.45am weekdays
- Teatime Club – 3.15pm – 4.30, 5.00, 5.30 and 5.45pm weekdays

Holidays

- Holiday Club – 8am – 5.30pm weekdays (Except Christmas Holidays and Bank Holidays).



Gresford Governors' Clubs & Playgroup

Childcare online Booking (CoB)

Parent and carers childcare booking system

Childcare online Booking (CoB) for Gresford Governors' Clubs & Playgroup

Parents and primary carers can register or log in to access the online booking system for all clubs.

For all other enquiries please contact Gresford Governors' Clubs & Playgroup on 01978 852342 or email childcare@allsaints-pri.wrexham.sch.uk.

Log in

Please enter your user account details below to access the Gresford Governors' Clubs & Playgroup online booking system. If you cannot remember your password, please enter your email address in the username and click reset.

Username	<input type="text" value="RichardHatwood"/>	*
Password	<input type="password" value="....."/>	*
	<input type="button" value="Log In"/>	<input type="button" value="Reset"/>

Register

Please complete the registration form below to access the Gresford Governors' Clubs & Playgroup online booking system. Once you have registered the system will automatically log you on and send you an email with your user account details.

First Name	<input type="text" value="Enter first name..."/>	*
Surname	<input type="text" value="Enter last name..."/>	*
Email address	<input type="text" value="Enter email..."/>	*
Secondary email address (optional)	<input type="text" value="Enter 2nd email..."/>	
Telephone no. (Primary)	<input type="text" value="Enter home number..."/>	*
Telephone no. (Secondary)	<input type="text" value="Enter home number..."/>	*

Important Contact Details

- Main School Office phone number – 01978 852342
- Main School Office email – mailbox@allsaints-pri.Wrexham.sch.uk
- Absence reporting phone number – 01978 852342
- Absence reporting email – attendance@allsaints-pri.Wrexham.sch.uk
- Childcare email – childcare@allsaints-pri.Wrexham.sch.uk

An answerphone service is in place for when the school office is closed

And finally ...

- Almost all children take going to school in their stride
- Some find it difficult to accept the fact that they must go to school all day
- This often occurs after the initial excitement has worn off



Diolch
Thank you