

You said ... 97% of respondents agreed that staff expect their child to work hard and to do their best. 98% believe the school is well run and managed.



We did ... we are delighted to see such positive feedback. We have revised our Home School Agreement and Teaching & Learning frameworks to continue to raise our shared expectations.

Parent & Carer Questionnaire – September 2025



You said ... 97% of respondents felt their child was helped to settle well when they started, and 95% agreed that their child receives appropriate extra support when needed.



We did ... we are continuing to update our transition guidance, resources and induction support for pupils. Where additional support is needed for pupils, we always strive to provide this and have implemented a School Based Therapist position this year to provide timely additional support for pupils and families.



Parent & Carer Questionnaire – September 2025

You said ... 97% of respondents felt children have plenty of opportunities for regular exercise, and 97% said their child has good learning experiences, including trips and visits.



We did ... We continually review our curriculum and seek to broaden the sporting and enrichment opportunities for pupils further. Mr Morris and Miss Tinniswood have planned an exciting sporting calendar for the year, and our international learning programme and other visits continues to grow and develop.

Parent & Carer Questionnaire – September 2025



You said ... 97% believe the school helps their child become mature and responsible.



We did ... Our School Councils and Pupil Voice Groups continue to evolve to develop pupils' responsibility. We are also developing further leadership roles for older pupils across the school to help develop their responsibility and commitment to the school.



Parent & Carer Questionnaire – September 2025

You said ... 96% of respondents agreed their child is safe in school.



We did ... We continue to improve the safety of the school site through Health & Safety reviews, new fencing and implementing road safety review recommendations. We are revisiting our Behaviour Policy and have strengthened our Anti-Bullying Policy to ensure all stakeholders are aware of the processes used.

Parent & Carer Questionnaire – September 2025



You said ... 96% of respondents agreed that the quality of teaching is good.



We did ... Our teaching and learning approaches continue to evolve to ensure pupils make good or better progress in their learning. We have refined tracking tools and our own teaching and learning toolkits to support staff in developing a shared understanding of how aspiring for excellence across the school looks.

Parent & Carer Questionnaire – September 2025

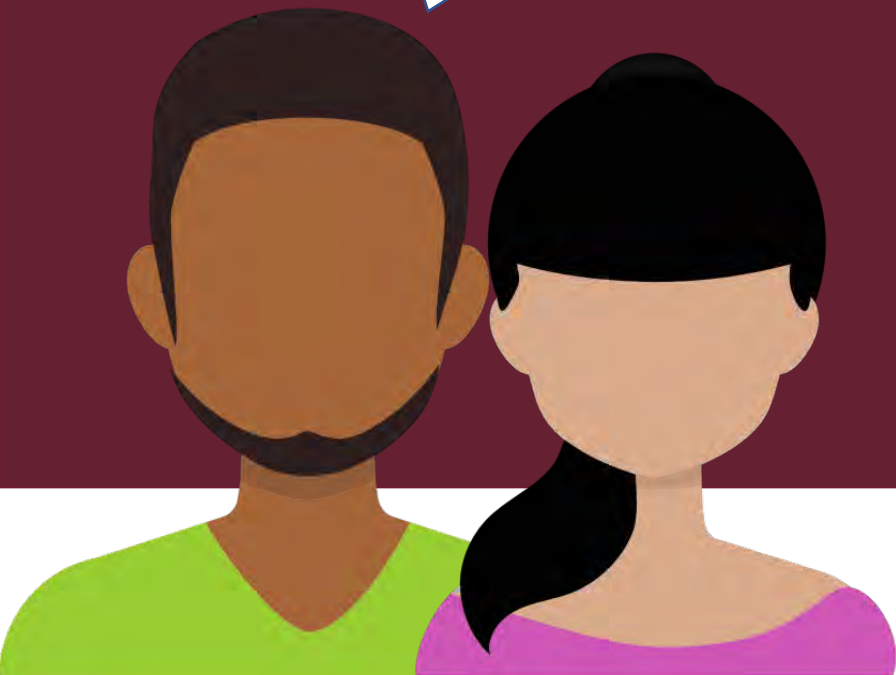


You said ... 86% of parents felt well informed about their child's progress, and 89% agreed the school seeks and values their views.



We did ... We continue to listen and work to improve our school with and through parental feedback, against the difficult financial backdrop facing schools. We are reviewing approaches to share 'live' updates on pupil progress through the My Child at School app over the coming school year.

Parent & Carer Questionnaire – September 2025



You said ... 90% felt pupils behave well, and 89% said the school responds to issues appropriately, 81% agreed that other children do not bully their child.



We did ... We have revised our Behaviour Policy and Reward and Recognition processes in school to support pupils in making positive choices and in ensuring clear consequences where poor choices are made.

Parent & Carer Questionnaire – September 2025



You said ... a few respondents raised concerns about bullying not always being dealt with appropriately.



We did ... We have strengthened our Anti-Bullying Policy, ensuring swift communication with parents and carers, and ensuring a clear process to raise and in turn deal with issues which may arise. We continue to implement the KiVa approach to managing any reported incidents of bullying in a timely, supportive and proactive manner.

Parent & Carer Questionnaire – September 2025

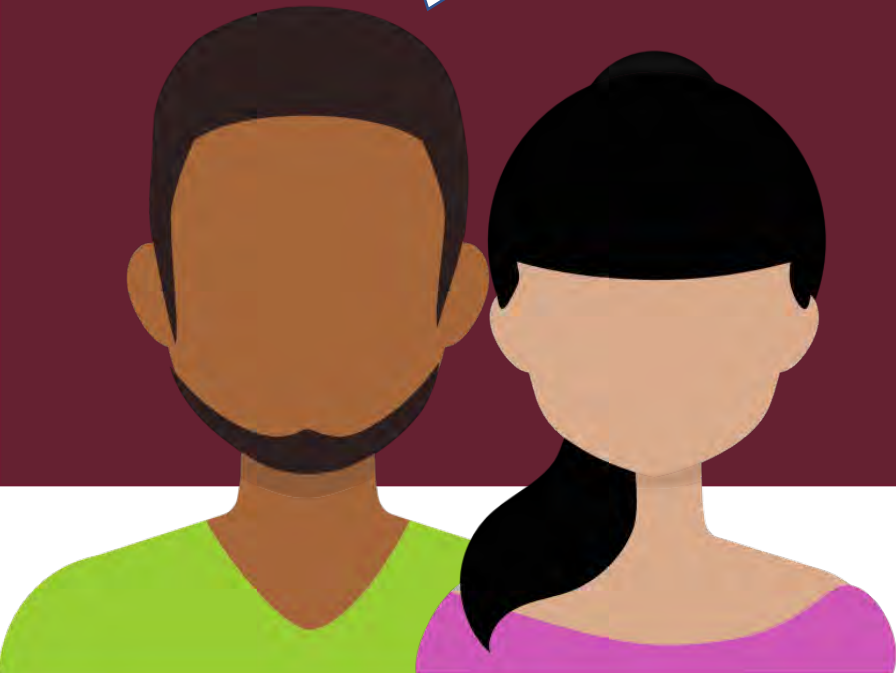


You said ... Homework and reading expectations were not always clear, and feedback on progress could be improved.



We did ... We have updated our Homework and Policy and will provide clear year-group expectations at the start of each term. Teachers will ensure regular feedback is shared with families on pupils' homework. We are streamlining approaches to ensure the expectations are clear and well communicated to support completion.

Parent & Carer Questionnaire – September 2025

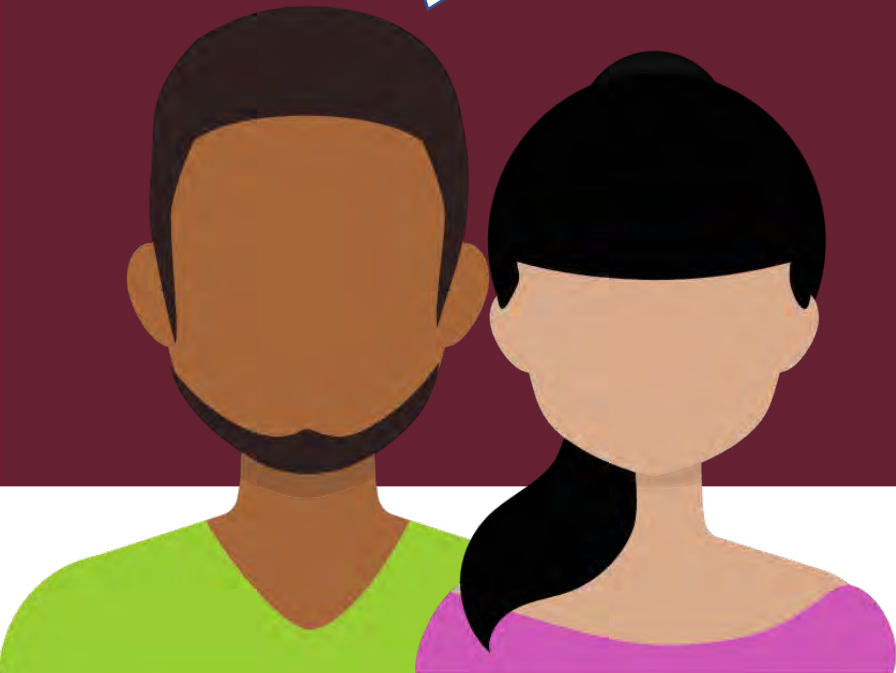


You said ... Parking and safe crossing near school is a concern.



We did ... We are working with the Local Authority road safety officers to review crossing provision and explore whether extra support can be provided to the school. We engage the Police with reports of unsafe driving and parking and request 'Go Safe' Officers attend the site as much as possible.

Parent & Carer Questionnaire – September 2025

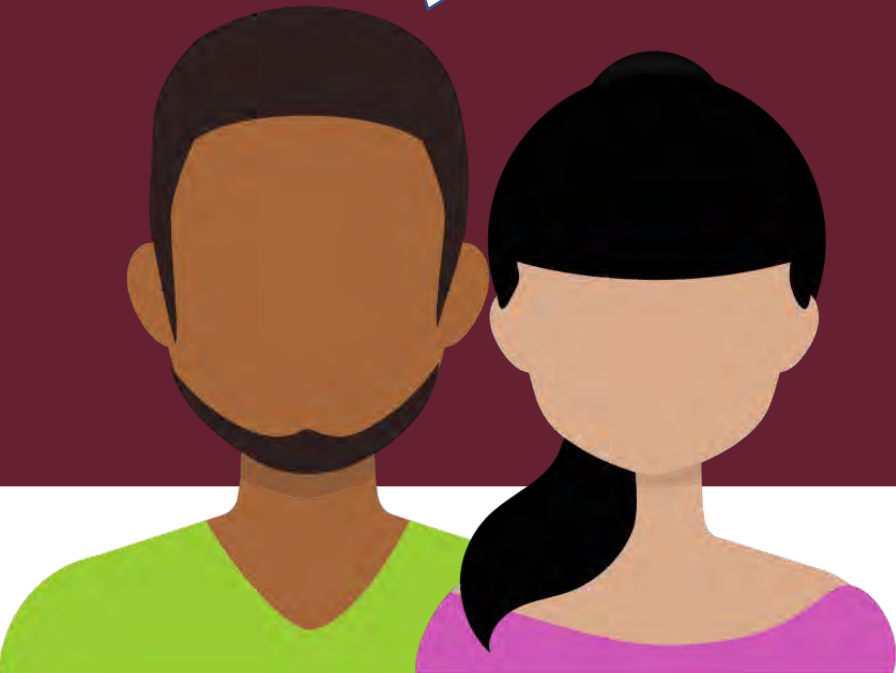


You said ... My boys love coming to school every morning." / "Fantastic school 👍👍👍" / "We love this school for our child. Thank you for all you do."



We did ... We are pleased to see so much positive feedback and are glad to see how many pupils enjoy coming to school.

Parent & Carer Questionnaire – September 2025



You said ... All teachers & teaching assistants are amazing and really care for my son.



We did ... Thank you for recognising our staff. We continue to invest in professional learning, including Forest School training, Additional Learning Needs support, and curriculum review and development.

Parent & Carer Questionnaire – September 2025



You said ... My child struggles with new routine and change. The staff from nursery and now reception have been incredible in supporting him.



We did ... We are proud of our Early Years transition support and will continue to strengthen personalised approaches, including for children who many have Additional Learning Needs.

Parent & Carer Questionnaire – September 2025

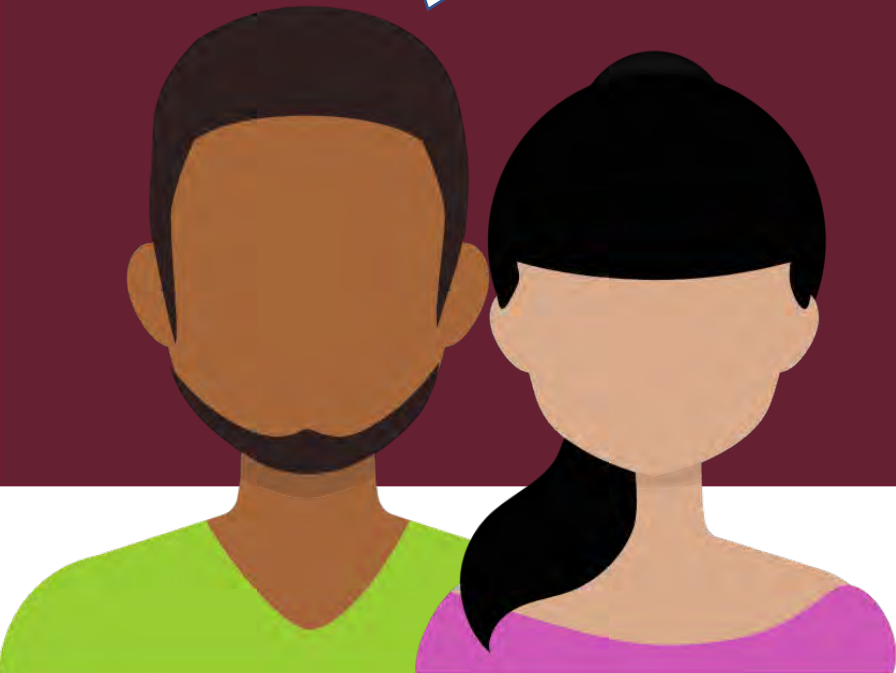


You said ... "The support our two children have had has been exceptional... We're so pleased with the choice we made to switch schools."



We did ... We will continue to ensure all new families feel welcome and supported through our induction and buddy systems.

Parent & Carer Questionnaire – September 2025



Whilst we are delighted with the strong positive feedback, we are committed to continuous improvement.



We will ... provide regular updates on our progress against the actions identified from parental feedback through our newsletters, school website and digital platforms. Our ongoing School Development Plan Summary is available on our school website.

Parent & Carer Questionnaire – September 2025

