



Ysgol yr Holl Saint All Saints' School

2022-23
NURSERY
WELCOME BOOKLET

Welcome to All Saints' School!



Dear Parent/Carer,

I would like to wish you and your family a very warm welcome to Ysgol yr Holl Saint – All Saints' School in Gresford. All Saints' School is a Church in Wales, Voluntary Aided School within Wrexham Local Authority and the Diocese of St Asaph.

Choosing the right school for your child is a very important decision and I hope that the information contained within this booklet will give you a flavour of the curriculum and enrichment offering at our school. I also hope that it will introduce the work of the school promoting children's moral, spiritual and emotional wellbeing.

Being a Church in Wales School, we enjoy excellent links with our local Church, All Saints' in Gresford, and the wider mission area. We are keen to ensure that our values-based approach helps to develop our children as responsible local and global citizens.

At All Saints' School, we recognise the importance of a broad and balanced curriculum and how such a curriculum impacts positively on our children's futures. We also place the wellbeing of our children at the centre of everything that we do; we firmly believe that children who are happy learn the best.

Links between home and school are of vital importance to ensure a successful education. We work tirelessly to develop these links through our open-door policy, community work, celebration of achievement and the work of our excellent Home School Association.

Our staff are always on hand to listen and work in cooperation with you to ensure that the needs of your child is being met. We have very high expectations at school, both in terms of behaviour and attitude to school life.

You and your family are very welcome to our school. We look forward to a fruitful partnership over the coming years.

Please do not hesitate to contact me directly with any questions or queries.

A handwritten signature in black ink, appearing to read 'R. Hatwood'.

Mr R. T. Hatwood BA (Hons) QTS NPQH
Pennaeth – Headteacher



Welcome to All Saints' School!



We are very happy that your child be joining us at Ysgol Yr Holl Saint - All Saints' School in September. This booklet will tell you about some of the exciting things that we do in school. It also has important information for you as a parent/carer. We are very proud of our fully-refurbished Early Years Foundation Phase Department.

Our Early Years Team is made up of two teachers: Mrs Speed and Mrs Parker; who are assisted by a dedicated team of learning support assistants, and higher level teaching assistants (HLTAs).

We look forward to meeting you!



Mr Hatwood
Headteacher



Mrs Parker
Early Years Manager



Mrs Speed
Early Years Teacher



Mrs Williams
HLTA - Early Years



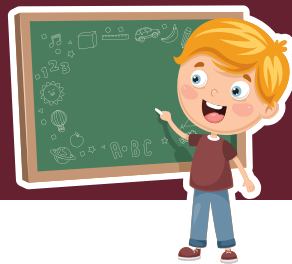
Miss Williams
Nursery Lead



Mrs Emberry
Teaching Assistant



Our Early Years Curriculum



The Foundation Phase curriculum in Wales is planned as a progressive framework that spans four years (3 to 7 years) to meet the diverse needs of all children, including those who are at an earlier stage of development and those who are more able. It is being refined with the introduction of the Curriculum for Wales, launching formally in 2022.

The Foundation Phase and Curriculum for Wales encompass the developmental needs of children rather than focusing solely on age-related outcomes to be achieved. Children should move on to the next stages of learning when they are developmentally ready and at their own pace.

Children will have the opportunity to learn through first-hand experiences with 'play' providing the vehicle. Through play, children practise and consolidate their learning, play with ideas, experiment, take risks, solve problems and make decisions. These can be made individually, in small or large groups. First-hand experiences allow children to develop an understanding of themselves and the world they live in. The development of children's self-image and feelings of self-worth and self-esteem are at the core of our curriculum at Ysgol Yr Holl Saint - All Saints' School.

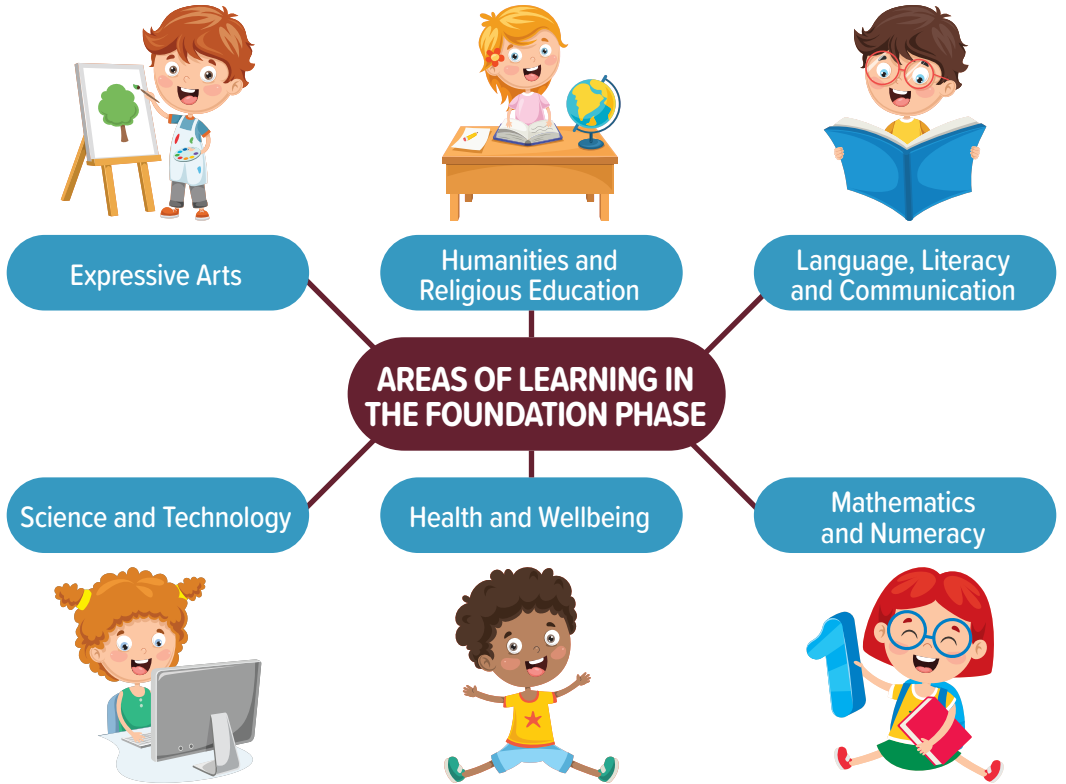
Following a very successful inspection by Estyn in February 2020, the school is now beginning to implement the Curriculum for Wales across the school. The Curriculum for Wales is made up of six areas of learning and experience, with the latter aspect building on the best elements of the Foundation Phase.

- Language, Literacy and Communication (including Welsh)
- Mathematics and Numeracy
- Humanities (including Religious Education)
- Science and Technology
- Health and Wellbeing
- Expressive Arts



Areas of Learning in the Foundation Phase

Our morning nursery sessions are from 9 a.m. until 11:30 a.m. and afternoon sessions from 12:45 p.m. until 3:15 p.m. Pupils then complete a focused task with an adult in one of the six areas of learning and experience:



Areas of Learning in the Foundation Phase

Once pupils have completed their focus tasks, they are free to choose from a range of exciting experiences:



Water



Construction



Craft Area



Sand



Role-play



Quiet Toys



Outdoor Play

These activities and our focused tasks link to a topic or theme; the learning is seamless!





Routine Organisation

Snack

Everyday pupils have snack time. They have a drink of milk or water and a healthy snack such as fruit, cucumber, tomatoes or raisins. Pupils sometimes prepare their own snack and pour their own drinks!

We ask parents/carers to pay £15 every half term for snacks, which is paid on the Wrexham County Borough Council website ParentPay. Parents/carers may pay £90 in September if this is easier.

Lunch

Children who stay all day through wrap around care can either have a school dinner or bring a healthy lunch box. The children go to the dining room to eat their food and will then go outside to play games with their friends. Some of the teaching assistants will be outside to look after them with our midday supervisors, who stay for the lunch hour.

ParentPay

All payments to school are now made using ParentPay. Further details and log on information will be provided when your child starts at school.



ParentPay
COUNT ON US



Outdoor Learning



We have our own outdoor area where pupils choose from a wide range of learning experiences. They play in the mud kitchen, dinosaur swamp or investigate bugs in the 'bug hotel'. They practise their writing and mark making, play with water and resources that develop their mathematical skills. Pupils also have a lovely wooden playhouse that they use for looking at books and having some quiet time. We are very lucky to have an outdoor area that is being made better all the time!

Physical Activities

Pupils go into the Hall for P.E. once a week. They come to school in their P.E. kit on P.E. days. P.E. kit consists of red, white or blue T-shirts and black shorts – colours are linked to houses, so please see your welcome letter. It is a very good idea to have names on all clothes, because they all look the same!

During the summer term next year, pupils will need too have some black pumps for P.E. because we will start to have P.E. out on the school field.





School Communication

The school website is an excellent way of keeping up to date with the latest school news. You can also see photographs of particular activities and events.

www.gresfordallsaints.co.uk

Your parent/carer may also follow us on Facebook or Twitter as @AllSaintsCIW

Class DoJo

Within the Foundation Phase, all classes will be using the Class DoJo system as a way of promoting good behaviour and celebrating pupils' achievements and progress within a two-week period. Each pupil will be given their own avatar.

During a day in school, pupils will be rewarded for their achievements, efforts and behaviour, and will receive "positive" DoJos. However, on occasions, there may be a need to give pupils a "needs work" DoJo.

We have agreed on a set of DoJos that will be used within all classes. These are:

- **POSITIVE:** being helpful, lining up quietly, gwaith yr wythnos, seren yr wythnos, good manners, good listening, on task.
- **NEGATIVE:** being unhelpful, talking in line, being rude to an adult, not using manners, unkind words or actions.

Within individual classes, staff will make use of more DoJos that may suit the age of the pupils, for example, fastening your own coat, completing homework and being brave.

As pupils are awarded DoJos, they are able to use computers and iPads to look at their totals. If they receive a "needs work" DoJo, it takes a point off their total, encouraging them to focus on gaining a "positive" DoJo. After the two-week period, the pupils in each class that have the most DoJos will be celebrated. The points will be cleared and each child starts again.

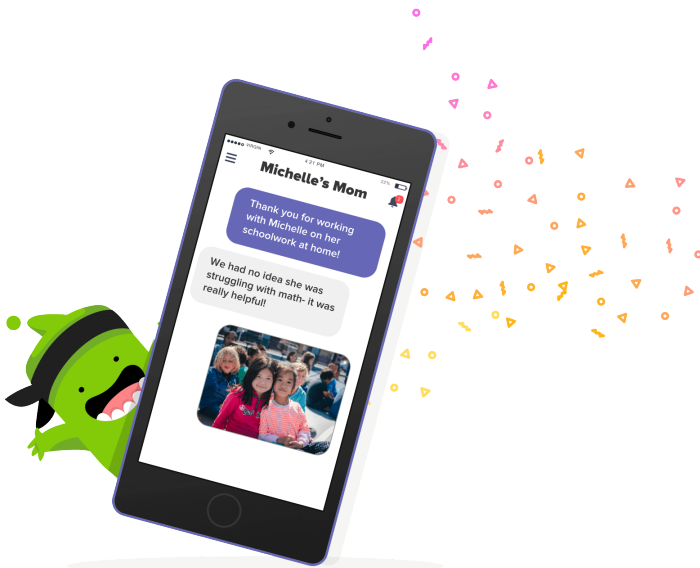


School Communication



As well as this, each fortnight Foundation Phase classes will be converting the pupils' DoJos to house points to run alongside a reward system being used across the school. House points are added up for a school total and the winning house will be announced in Celebration Assembly on a Friday. The house that has won the most weeks during a term will be given a prize in the last week of term.

As a parent/carer, you are able to access the Class DoJo. This can be done by downloading the app to your smartphone (Android or iOS), or by visiting www.classdojo.com on a computer. You will be able to see your child's progress. Teachers are able to add information to the Class Story area of the website and you will be able to read and look at photographs relating to the things your child has been doing in school. You are also able to like these posts and write positive comments. This can only be accessed by parents of children in that class. Teachers are also able to send messages to parents who have logged on.



ClassDojo





We wear a school uniform to come to school.

In Winter, we wear:

- Blue or white short-sleeved shirts.
- Charcoal grey trousers.
- Maroon sweaters or our school sweatshirts.
- School tie: pale blue with maroon stripes.
- Black shoes (velcro fastenings are handy when you need to take them off for P.E.)
- Blue or white short-sleeved blouses.
- Maroon jumpers/cardigans or school sweatshirts.
- Grey skirts, pinafore dresses or trousers.
- School tie: pale blue with maroon stripes.
- White socks, grey or white tights.
- Black shoes.

In Summer, we wear:

- Pale blue or white polo shirts.
- Grey trousers/shorts.
- Maroon sweaters or school sweatshirts.
- Black shoes.
- Pink gingham or striped dresses.
- Maroon cardigans or jumpers.
- White socks.
- Sandals.



Useful Tips



- **ENCOURAGE INDEPENDENCE:** Children who are able to care for themselves and their belongings will feel more confident at school. Encourage children to practise personal hygiene such as wiping their nose and toileting independently. Also encourage them to dress/undress themselves. Help them to feel confident and independent by dressing them in clothing which is simple for them to manage with little adult help, e.g. velcro shoes, coats with simple fastenings.
- **LABEL ALL CLOTHING:** Please label all your child's clothing with their name as this will prevent loss, confusion and possible upset for your child. Make your child familiar with what their name looks like and show them where their labels are, especially in coats.
- **PACK A CHANGE OF UNDERWEAR:** Accidents do happen especially in the early stages. We do have a supply of spare clothes, but children often prefer to change into their own clothes.
- **SHARE INFORMATION WITH YOUR CHILD'S CLASS TEACHER:** Children learn best when parents/carers and teachers share together in a partnership. Regular communication bridges the gap between home and school and provides opportunities to exchange information which support children's learning.
- **KEEP US INFORMED OF ANY CHANGES:** Changes to your child's family situation can impact on their emotional and academic well-being, e.g. birth of a sibling, divorce or separation, death of a loved one, moving house. If you keep us informed of any changes in circumstances, your child can be supported as necessary. It is also important to notify the school of changes to contact details, such as address and emergency telephone numbers.
- **ROUTINE:** An organised home routine, both the night before and in the morning can lower your child's anxiety about coming to school.
- **BE PREPARED FOR INITIAL DIFFICULTIES:** Although most children take going to school in their stride, some have initial problems. Some find it difficult to accept the fact that they must go to school every morning/afternoon. This often occurs after their initial excitement has worn off!





- **TALK:** Talk to your child about the children they know who are starting school with them. Talk to them about making new friends and the activities that they might do in school.
- **ENCOURAGE MARK MAKING:** Using a variety of implements, e.g. pens, pencils, paints, etc. If your child is ready to hold a pen/pencil, encourage tripod grip.
- **READING:** Look at books with your child. Encourage them to help tell the story by looking at the pictures.
- **SCISSORS:** Invest in a high quality pair of scissors and allow your child to practise cutting and snipping.
- **MATHS:** Develop an awareness of number, such as when playing number games, jigsaws, looking at numbers on doors, counting red cars, when baking, etc. Look for 2D shapes in the environment, e.g. square windows, circle grid, rectangle door.
- **DISCOURAGE YOUR CHILD FROM BRINGING THEIR TOYS FROM HOME INTO SCHOOL:** This may cause them to be lost or broken. If on occasion we require children to bring in items from home we will send out a message via ClassDojo.



February 2020

Estyn Report

Estyn During their time at the school, most pupils make good progress in reaching high standards in their writing, mathematics and Welsh oracy skills. Nearly all pupils behave exceptionally well and show a high standard of care and consideration for others. Staff promote pupils' cultural, social and moral development particularly well. The promotion of shared core values is a strength of the school.

The school has an inclusive ethos where all staff know the pupils well and provide high levels of care, support and guidance. Teachers plan a wide range of interesting and stimulating learning opportunities. As a result, pupils have very positive attitudes towards learning. This supports their development as independent learners and enables them to make good progress.

The headteacher provides strong and effective leadership. A supportive team of staff show strong commitment to the school and its pupils. Staff engage with new initiatives well and work effectively together to develop the school as a thriving learning community.

Foundation Phase Highlights

The school takes good account of foundation phase pedagogy. There is a strong emphasis on developing pupils' literacy, mathematical and creative skills through interesting practical activities, both indoors and outside. This supports pupils' wellbeing and their engagement in learning very effectively.

Younger pupils in the Foundation Phase discuss confidently which animals live in the arctic and how ice feels. Year 2 pupils speak articulately when presenting their unicorn stories to others.

In the foundation phase, many pupils understand the features of a wide variety of genres and use them thoughtfully in their own work, for example when constructing exciting bonfire poems in Years 1 and 2.

Many foundation phase pupils use familiar (Welsh) greetings and are increasingly confident in picking out key vocabulary in simple sentences.

In the foundation phase, most pupils use their information and communication technology (ICT) skills to support their learning successfully.

Nearly all pupils have a positive attitude towards their learning and take a keen interest in their work. For example, pupils in the foundation phase talk animatedly about their topic 'The Little White Owl'.



Term Dates 2021/22



Autumn Term

School opens **Monday 5th September 2022.**

Half-term from Monday 31st October 2021 until Friday 4th November 2022 inclusive.

School closes **Friday 23rd December 2022.**

Spring Term

School opens **Monday 9th January 2023.**

Half-term from Monday 20th February 2023 until Friday 24th February 2023 inclusive.

School closes **Friday 31st March 2023.**

Summer Term

School opens **Tuesday 18th April 2023.**

Half-term from Monday 29th May 2023 until Friday 2nd June 2023 inclusive.

School closes **Thursday 20th July 2023.**

To access details of the term dates for school, please follow this link:

https://www.wrexham.gov.uk/assets/pdfs/education/term_dates/termdates.pdf

Alternatively, you may scan the following QR on the right-hand side of this page.



Should staff training days change due to COVID-19 implications, we will notify parents/carers accordingly.

Staff Training Days

Thursday 1st September 2022

Friday 2nd September 2022

Monday 27th February 2023

Monday 17th April 2023

Monday 5th June 2023





Ysgol yr Holl Saint All Saints' School


School Hill, Gresford, Wrexham, LL12 8RW



 /AllSaintsCIW

 @AllSaintsCIW

 01978 852342

 mailbox@allsaints-pri.wrexham.sch.uk

 www.gresfordallsaints.co.uk